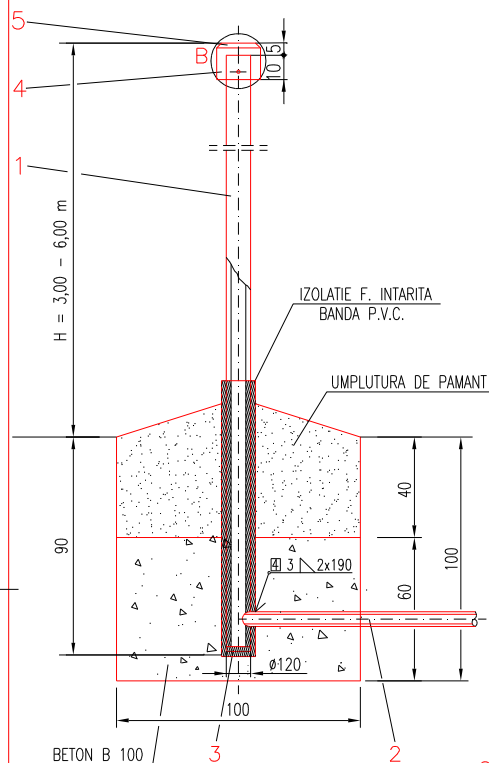
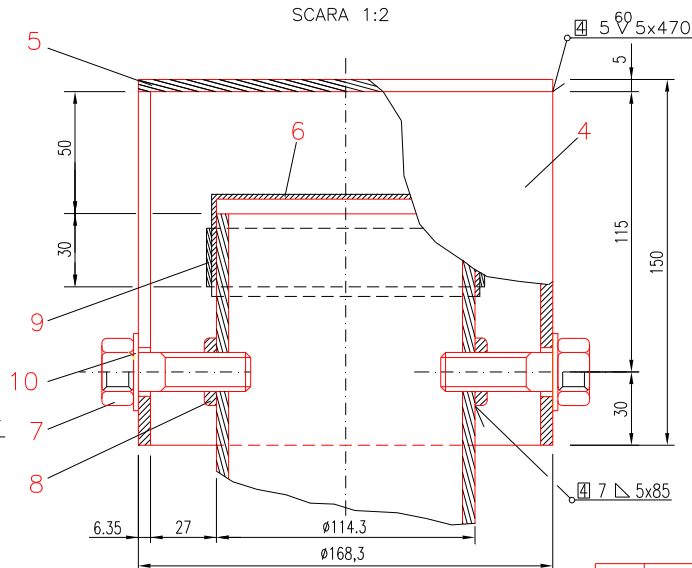


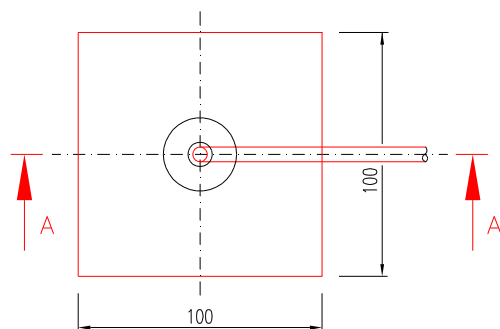
SCARA 1:20



SCARA 1:2





SCARA 1:20



GREUTATEA TOTALA IN FUNCTIE DE INALTIMEA "H"

H=0.90 m GREUATEA Kg	3.90	4.40	4.90	5.40	5.90	VOLUM BETON
	74.900	83.200	91.500	99.800	108.100	0.50m ³ /h

- PENTRU FUNDATII SE VA FOLOSII BETON B100.
- UMPLUTURA DE PAMANT VA FI BINE COMPACTATA IN STRATURI DE 10–20 cm.
- SITA „DAVIS” SE COMPUNE DIN 2 TESATURI DE SARMA SUPRAPUSE, DIN SARMA DE 0,3.....0,4 mm GROSIME SI 144 OCHIIURI / cm.
- SUDURILE VOR FI EXECUTATE ELECTRIC CU ELECTROZI E 37 0.C.1.1., SR EN 499–97 CONFORM C 150–84 CLASA 5.

T.P. III.2.b./PERMANENT						
10	SAIBA GROWER N 16	STAS 7666-2/94	2	ARC 6	-	-
9	COLIER FALTUIT	-	1	-	30x10x350 STAS 395-89	-
8	PIULITA B M16	SR EN ISO 4034-2002	2	Gr.5	-	-
7	SURUB M16x46	SR ISO 4016-94	2	Gr.5.8	-	-
6	DAVIS SIEVE	SR ISO 3310-1/2000	1	-	200x200	-
5	FUND DREPT	-	1	-	5x170x170 SR EN 10029-94	-
4	CAPAC	SR EN 10208-1/99	1	L 245 GA	lv.Ø168,3x6,3mm l=150	-
3	FUND DREPT	-	1	-	5x120x120 SR EN 10029-94	-
2	RACORD	SR EN ISO 3183	1	L 210 N PSL1, SMLS	lv.Ø60,3x4mm l=150	-
1	TEAVA DE AERISIRE	SR EN ISO 3183	1	L 210 N PSL1, SMLS	Ø114,3x4,0mm	-
POZ.	DENUMIREA	NR. DESEN/STAS	BUC.	MATERIAL	OBSERVATII	MASA NETA (kg/buc.)
Tehn.CONSTANTINESCU R.		Ing. ILIE M.		Ing. RADUTA D.		Ing. TOADER N.
PROIECTAT		APROBAT		VERIFICAT		SEF PROJECT
0	11.2016	EMIS PENTRU APROBARE				
REV	DATA	DESCRIEREA REVIZIEI				
FORMAT A3	DATA PRIMEI EDITII	11.2016	SCARA	1:20; 1:2	FISIER ZO0961.00	
CLIENT		PROIECTANT				
 S.C. CONPET S.A. PLOIESTI		 PETROSTAR S.A.		PETROSTAR S.A. CALEA BUCURESTI NR.: 37 PLOIESTI, 100680 ROMANIA COD UNIC: 1360296		
PROIECT NR.160/4924						
INLOCUIRE CONDUCTA TITEI Ø10 3/4" F1+F2 POIANA LACULUI-SILISTE-PLOIESTI IN ZONA SUPRATRAVERSARE CANAL DE IRIGATII, LOC. BUCSANI SI DJ. 720 A ADANCA-BUCSANI,JUD.DAMBOVITA, PE O LUNGIME DE CCA. 2300 M PE FIECARE FIR						
DISPOZITIV DE AERISIRE						
DESEN NR. ZO-0961			FILA 1		DIN 1	REVIZIA 0